

1. SEIZING OPPORTUNITIES IN RESEARCH

Research Grant Board Applications - Standard, Fellowships & Small Grants 2005/2006

Table A: shows the number of grant applications awarded funding. Success rates have decreased for Fellowships and Small Grants, at 20% and 33% respectively, compared to 28% and 36% in 2004/05. Standard Grants have increased by 2%, at 21%.

Table B: shows the number of applications by discipline. Linguistics has had the highest percentage success rate for the third consecutive year, at 39%. This compares to 40% in 2004/05 and 51% in 2003/04. In second is Demography at 37%, followed by Social Anthropology and Psychology, at 34%. Disciplines with the lowest success rates are Human Geography and Interdisciplinary Studies, at 14%.

Table C: shows the number of applications for the Research Seminar competition between 2001-06. The success rates have been increasing marginally over the last three years, with an increase of 4% in 2005-06, despite the decreasing number of applications [13% decrease in 2005-06 and 6.5% decrease in 2004-05]. The quality of applications meriting funding has been relatively high, and has allowed the Board to fund close to the expected maximum number of awards i.e. up to 50 awards.

Table D: shows the number of applications for the Professorial Fellowship competition between 2002-06. Although the number of applications has been gradually decreasing over the last three years, the success rates have been increasing. The success rate in 2005-06 is 19%, which represents an increase of 8%.

Table E: shows the number of applications and awards by territory from 2001-06. The success rate of applications from Wales has increased by 13% in the last year, with little variation in the number of applications. Applications from Northern Ireland have remained steady for the past three years and have also seen a rise in success rates by 8%.

Table F: shows the value of awards by territory for 2005-06.

Table G: shows the average decision times for grants from 2000-06. Average decision times for a Standard Grants or Fellowship is 16 weeks, and 12 weeks for Small Grants. This compares to 18 weeks and 12 weeks respectively for 2004-05.

Table A: Research Grants by Number

	Number of Applications considered			Number Graded Alpha			Number Recommended for Award			% Alpha Rated			% Total Applications Funded			Value £m
	Standard	Small	Fell	Standard	Small	Fell	Standard	Small	Fell	Standard	Small	Fell	Standard	Small	Fell	
	481	520	50	419	452	43	99	173	10	87	87	86	21	33	20	
GRAND TOTAL	1051			914			282			87			27			26.2
Total 2004-05	935			779			257			83			27			21.9
Total 2003-04	831			664			283			80			34			22.9
Total 2002-03	810			583			205			72			25			15.7
Total 2001-02	734			539			230			73			31			15.8
Total 2000-01	649			533			217			82			33			15.2

Success rates for awards per round, by number and value are available on the ESRC Society Today web site at http://www.esrcsocietytoday.ac.uk/ESRCInfoCentre/Images/Statistics%2005_06_tcm6-9585.pdf

Table B: Applications and Awards by Discipline

Discipline	RANK ORDER 05/06	Applications					Awards					% success rate				
		01/2	02/3	03/4	04/5	05/6	01/2	02/3	03/4	04/5	05/6	01/2	02/3	03/4	04/5	05/6
Area Studies	8	6	4	6	13	12	3	0	2	4	3	50		33	31	25
Demography						3										
Economic and Social History	2	34	43	32	32	41	14	16	12	8	15	41	37	38	25	37
Economics	5	64	85	117	77	112	25	29	48	30	34	39	34	41	39	30
Education	10	75	67	62	83	100	20	11	11	20	20	27	16	18	24	20
Environmental Planning	6	14	14	19	19	17	7	4	5	2	5	50	29	26	11	29
Human Geography	13	47	53	51	56	43	22	13	18	19	6	47	25	35	34	14
Interdisciplinary Studies	13	26	20	25	46	35	4	9	4	11	5	15	45	16	24	14
Linguistics	1	21	29	35	30	38	9	9	18	12	15	43	31	51	40	39
Management and Business Studies	11	61	45	55	63	65	10	7	12	14	12	16	16	22	22	18
Political Science and International Relations	7	42	60	70	63	62	13	13	15	12	16	31	22	21	19	26
Psychology	3	172	176	184	240	268	6	51	78	72	91	27	29	42	30	34
Science & Technology Studies	4					6					2					33
Social Work	4					3					1					33
Social Anthropology	3	34	36	27	26	35	10	14	9	9	12	29	39	33	35	34
Social Policy	10	25	35	36	38	64	9	5	11	8	13	36	14	31	21	20
Socio-Legal Studies		17	16	11	32	9	5	6	5	6		29	38	45	19	
Sociology	9	82	115	93	97	126	26	28	33	25	30	32	24	35	26	24
Statistics and Computing & Methodologies	12	14	12	8	20	12	7	4	2	5	2	50	33	25	25	17
Total		734	810	831	935	1051	230	219	283	257	282					

Table C: Research Seminar Competition

	Applications					Awards				
	2001/2	2002/3	2003/4	2004/5	2005/06	2001/2	2002/3	2003/4	2004/5	2005/06
Total	88	131	200	187	162	36	49	46	49	49

Table D: Professorial Fellowship Competition

Discipline	Applications				Awards			
	2002/03	2003/04	2004/05	2005/06	2002/03	2003/04	2004/05	2005/06
Area Studies	0		1	2				1
Demography								
Economic and Social History	3	2	1			1		
Economics	11	7	3	6	2	2	2	2
Education	4	4	5	1		1		
Environmental Planning	0							
Human Geography	2	1	4	2		1		
Interdisciplinary Studies	4	3	2		1			
Linguistics	1	2	2			1		
Management and Business Studies	8	4	3	4				
Political Science and International Relations	10	3			1	1		
Psychology	11	2	1	4	1	1		2
Science & Technology Studies								
Social Work								
Social Anthropology	3		3	1			1	1
Social Policy	2	4	2	2				
Socio-Legal Studies	5			1	1			
Sociology	16	7	6	3	2		1	
Statistics and Computing & Methodologies	2		2		1			
Total	82	39	35	26	9	8	4	6

Table E: Numbers of Applications and Awards by Territory

Country	No. Applications					No. Awards					Success %				
	01/2	02/3	03/4	04/5	05/06	01/2	02/3	03/4	04/5	05/06	01/2	02/3	03/4	04/5	05/06
England	550	595	687	783	876	176	162	233	221	236	32	27	33	28	27
Scotland	84	92	87	82	104	28	28	30	20	21	33	30	34	24	20
Wales	33	41	42	58	62	14	12	18	12	21	42	29	43	21	34
N Ireland	9	16	11	11	9	1	3	5	4	4	11	19	45	36	44
Overseas	n/a	n/a	4	1	0	n/a	n/a	0	0	0	n/a	n/a	0	0	0
Total	676	745	831	935	1051	219	205	283	257	282					

Table F: Value of Awards by Territory

	Value of awards £k			Value as a percentage of the total amount awarded		
	05/06	06/07	07/08	05/06	06/07	07/08
England	20782			79%		
Scotland	2836			11%		
Wales	2295			9%		
N Ireland	239			1%		
Overseas	0			0		
TOTAL AMOUNT AWARDED	26152					

Table G: Average Decision Times

	2000/2001	2001/2002	2002/2003	2003/2004	2004/2005	2005/2006
Average weeks receipt to decision Standard Grants and Fellowships	20.2	18.9	15.5	18	18	16
Average weeks receipt to decision Small Grants	13.8	10.9	9.5	8.5	12	12
% Standard Grants and Fellowships receiving a decision in 24 weeks	N/A	N/A	N/A	88%	87%	93%
% Small Grants receiving a decision in 24 weeks	N/A	N/A	N/A	100%	97%	97%

2. CREATING OPPORTUNITIES IN RESEARCH

Strategic Research Board - Investments

Table H: lists the Strategic Research Board's major partners in co-funded investments in 2005/06. Partners featuring the most in the list of 18 investments are the Engineering and Physical Sciences Research Council (EPSRC), who contribute to eight investments, and the Department of Trade and Industry (DTI), who contribute to five.

Table I: provides a list applications and outcomes of Strategic Research Board Programmes during 2005-06. A full list of current programme and centres is in the ESRC Annual Report 2006.

Table H: Strategic Research Board - major co-funding 2005/2006

Activity	Partners
National Collaboration on Ageing Research	MRC, EPSRC, BBSRC
AIM Management Initiative	EPSRC
Carbon Vision	Carbon Trust, EPSRC, NERC
Centre for Analysis of Risk and Regulation	Deutsche Bank
Centre for Complex Product Systems	DTI
Centre for Economic Performance	DfES, Leverhulme Trust
Centre for Market and Public Organisation	Leverhulme Trust
Centre for Research on Innovation & Competition	British Nuclear Fuels Ltd; Scottish Enterprise, DTI
Cultures of Consumption programme	AHRC
Evolution of Business Knowledge programme	DTI
New dynamics of Ageing	BBSRC, EPSRC, MRC
People at the Centre of Communication and Information Technologies programme	EPSRC, DTI
Rural Economy and Land Use programme	BBSRC, NERC, DEFRA, Scottish Executive
Science in Society programme	DEFRA
Sustainable Technologies Initiative	EPSRC; DTI; DEFRA; BBSRC
Teaching and Learning Research Programme	HEFCE; DfES, Scottish Executive, Welsh Assembly Government, N Ireland Executive
Towards a Sustainable Energy Economy programme	EPSRC, NERC
UK Energy Research Centre	
Tyndall Centre for Climate Change	NERC, EPSRC

Table I: Applications and Outcomes of Strategic Research Board Programmes

<i>Programme</i>	<i>Outlines</i>	<i>Shortlisted</i>	<i>Full Proposals</i>	<i>Funded projects</i>
New Security Challenges Small Large	65	15	46 15	8 7
Rural Economy and Land Use	89	28	28	11
Non Governmental Public Action (Phase 1) Small Large	102	46	42 44	15 11
Teaching and Learning Research Programme (Widening Participation phase)	65	48	48	7
World Economy and Finance (phase 2)	58	25	25	10
AIM (Ghoshal Fellowships)	53	15	15	9
Stem cells capacity building (invited applications)			3	2
New Dynamics of Ageing (first phase)	73	10	10	2
Public Services (second phase) Small Large			29 78	5 9

3. CAPACITY - PEOPLE & DISCIPLINES

Training and Development Board – Studentship Allocations

Table J: shows the distribution of quota studentships by Higher Education Institution (HEI) in 2006/07 and 2007/08. The London School of Economics has the highest number of studentships with 58, followed by Cambridge (with 56) and Oxford (with 55).

Table K: shows 1+3 and +3 Studentship Allocations for 2006/7 and 2007/8 by discipline. Economics has the highest number, at 132, followed by Sociology [109] and Management and Business Studies [104]. Both Economics and Management and Business Studies were identified as priority areas in need of additional, targeted support.

Table J: 2006/07 and 2007/08 quota studentship distribution by HEI

Institution/Consortia	Total 2 Year Quota Allocation
University of Aberdeen	
Anglia Polytechnic University (Chelmsford)	
Aston University	3
University of Bath	11
University of Birmingham	29
University of Bradford	6
University of Brighton	
University of Birmingham	
University of Bristol	40
Brunel University	
University of Cambridge	56
Cardiff University	48
City University	
University of Coventry	
Cranfield University	8
De Montfort University	4
University of Dundee	
University of Durham	22
University of East Anglia (inc. interdisc awards)	8
University of East London	
University of Edinburgh	47
University of Essex	39
University of Exeter	6
University of Glasgow	11
Glasgow Caledonian University	
University of Gloucestershire	
Heriot-Watt University	3
University of Hertfordshire	
University of Huddersfield	3
University of Hull	
University of Keele	3
University of Kent	14
Kingston University	
University of Lancaster (inc. interdisc awards)	50
University of Leeds	22
University of Leicester	
University of Lincoln	
University of Liverpool	6
University of London: Birkbeck College	10
University of London: Goldsmith's College	8
University of London: Imperial College of Science	14
University of London: Institute of Education	9
University of London: King's College	13
University of London: London Business School	11
University of London: Queen Mary	7
University of London: Royal Holloway and Bedford New College	4
University of London: School of Economics and Political Science	58
University of London: School of Hygiene and Tropical Medicine	12
University of London: School of Oriental and African Studies	3
University of London: University College	22
University of Loughborough	7
University of Manchester	52
Manchester Metropolitan University	3
University of Middlesex	
University of Newcastle	12
Northumbria University	

Institution/Consortia	Total 2 Year Quota Allocation
University of Nottingham	23
Nottingham Trent University	
The Open University	10
University of Oxford	55
Oxford Brookes University	
University of Plymouth	8
University of Portsmouth	3
University of Reading	3
The Robert Gordon University	
Roehampton University	
University of Salford	
University of Sheffield	30
Sheffield Hallam University	3
South Bank University	
University of Southampton	30
University of St Andrews	
University of Stirling	12
University of Strathclyde	7
University of Sunderland	
University of Surrey	8
University of Sussex (inc. interdisc awards)	14
University of the West of England at Bristol	
University of Wales: Aberystwyth	7
University of Wales: Bangor	3
University of Wales: Swansea	
University of Warwick	32
University of Westminster	
University of York	23
Total	955

Consortia

Advanced Postgraduate Training in Human Geography consortia	7
London Sociology Research Training Consortia (LSE and City)	4
Oxford Psychology Consortia*	6
Scottish Human Geography Consortia*	5
Scottish Graduate Programme in Economics*	11
	33

Overall Total

988

Table K: 1+3 and +3 Studentship Allocations – Total 2 Year allocation for 2006/7 and 2007/8 by Discipline

Discipline	2 Year Allocation
Area and Development Studies	23
Economic and Social History	27
Economics	132
Education	80
Environmental Planning/Planning	21
Human Geography	70
Linguistics	23
Management and Business Studies	104
Political Science and International Studies	88
Psychology	80
Science and Technology Studies	20
Social Anthropology	31
Social Policy	33
Social Work	28
Socio- Legal Studies	37
Sociology	109
Statistics, Methods and Computing	47
Demography	20
Interdisciplinary	15
Total	988

4. CAPACITY - RESOURCES

Research Resources Board - Datasets Delivered

Figure 1: shows the steady rise in the usage of datasets delivered by the Economic and Social Data service (ESDS). The dramatic growth in datasets delivered occurred with the introduction of new technology, such as the Download facility.

Figure 2: shows that over the life of the service, the numbers registering to use the ESDS has rocketed. This is a major achievement for the new service since, prior to its existence, the number of users in a given year would normally have been between two and three thousand.

Figure 3: shows the percentage of data usage by discipline. Economics and Econometrics claims a significant percentage of data usage, at 36% followed by Other¹, at 15%. At the bottom with around 3% of usage is Statistics and Operational Research. This is largely due to the type of research being undertaken by economists working in the field of labour markets and employment.

Table L: shows the percentage of usage by institution. The University of Warwick is ranked at the top followed by the London School of Economics in second and the University of Oxford in third. The top two institutions house four leading centres conducting research on employment and labour markets. These are the Warwick Institute for Employment Research (IER), the Industrial Relations Research Unit (formerly the Centre for International Employment Relations Research (CINTER)), and ESRC Research Centre for Analysis of Social Exclusion (CASE) and Centre for Economic Performance (CEP). CINTER and CEP were previously funded by ESRC.

Table M: shows the most Used Datasets at the Economic and Social Data Service between April 2004 - March 2005. The Labour Force Panel Survey was ranked first during this period, followed by the British Household Panel Survey in second. This correlates with the work being carried out by the centres at Warwick and LSE e.g. welfare policy.

¹ Other includes: Communication, Cultural & Media Studies; Education; Environmental Sciences; History; Law; and Psychology

Figure 1: Datasets delivered, April 2000 to March 2005

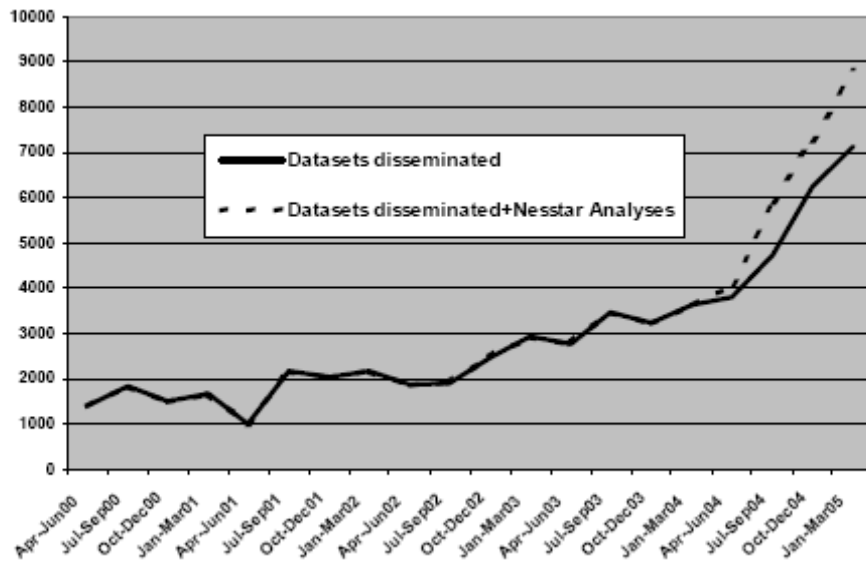


Figure 2: Number of new registrations, October 2000 to March 2005

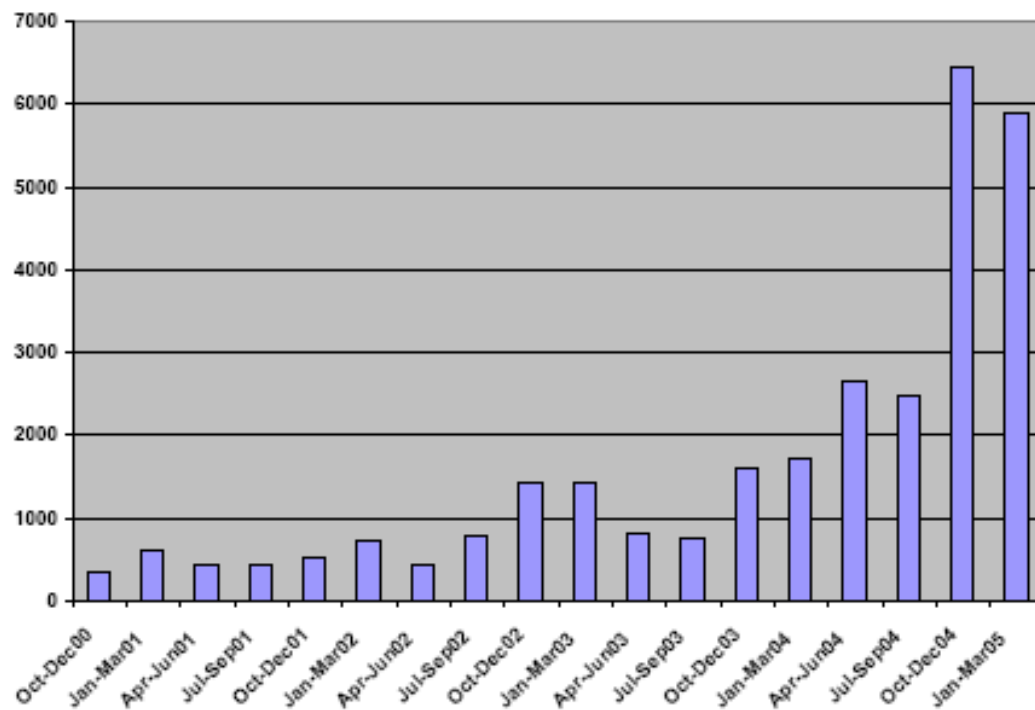
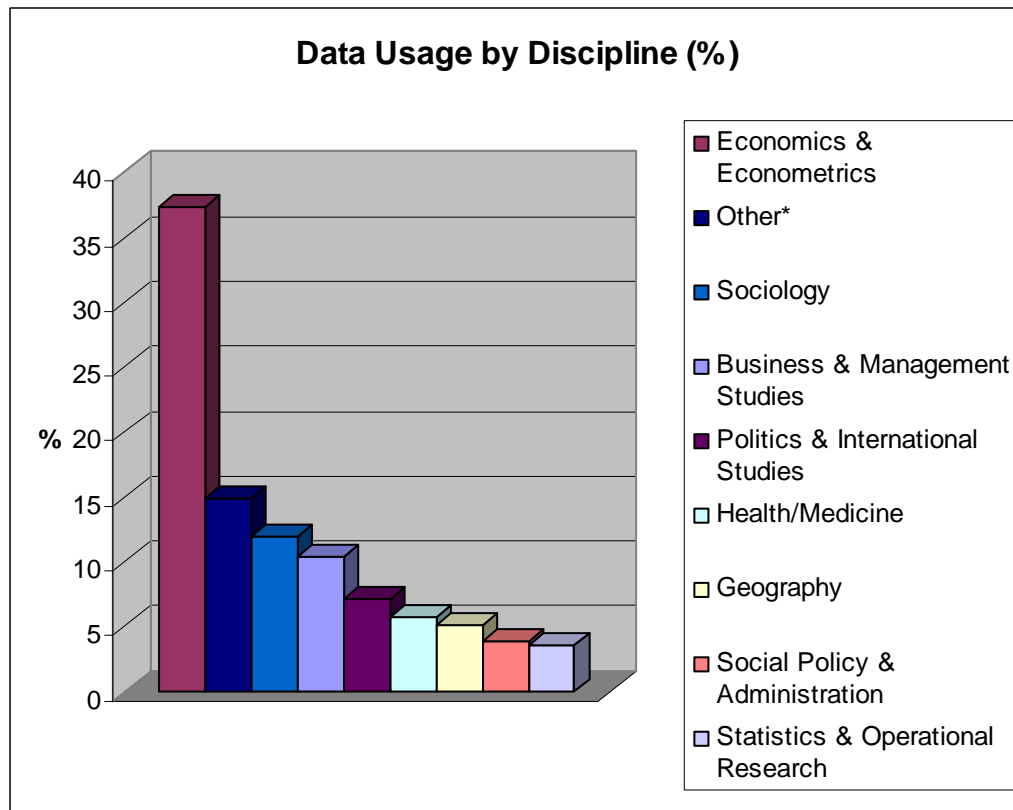


Figure 3: Data Usage by Discipline (%)



*Other includes: Communication, Cultural & Media Studies; Education; Environmental Sciences; History; Law; and Psychology

Table L: Top 20 Institutions by Usage

University of Warwick
London School of Economics
University of Oxford
University of Essex
University College London
University of Manchester
University of York
University of Leicester
University of Edinburgh
University of Nottingham
University of Cambridge
University of Bristol
University of Leeds
University of Surrey
University of Southampton
Sheffield Hallam University
University of Stirling
Oxford Brookes University
University of Newcastle
University of Bath

Table M: Most Used Datasets at Economic and Social Data Service, April 2004 - March 2005

Title	Rank
Labour Force Survey, 1992-	1
British Household Panel Survey, 1991-	2
General Household Survey, 1971-	3
Family Expenditure Survey, 1961-2001	4
Health Survey for England, 1991-	5
British Social Attitudes Survey, 1983-	6
British Election Studies	7
1970 British Cohort Study (BCS70)	8
Expenditure and Food Surveys, 2001-	9
National Food Survey, 1974-2000	10
Family Resources Survey, 1993-	11
British Crime Survey, 1982 -	12
Eurobarometer Survey Series, 1974-	13
National Child Development Study, 1958-	14
Workplace Employee Relations Survey, 1980-	15

5. PERFORMANCE

Research Evaluation Committee - Evaluations

Table N: provides a breakdown of evaluation grades by discipline. During 2005, 333 End-of-Award reports from Large and Small grants were evaluated. Of these 90 (27%) were judged to be 'Outstanding', 226 (68%) 'Good', 17 (5%) 'Problematic', with none 'Unacceptable' and 'Ungraded'. This represents an increase of 11% for projects graded Outstanding [4%] and Good [7%].

Both Linguistics and Economic and Social History have the greatest number of cumulative projects graded Outstanding, with a percentage of 34%, followed closely by Social Anthropology at 31%.

Administration

Table O: provides data on office staffing by directorate and band, as well as staff training, sick absence and turnover.

Table N: Evaluation Grades by Discipline 2005

Grades						
Discipline	O	G	P	U	Un	Total
Area Studies	1	2	0	0	0	3
<i>Cumulative Total(1996-2005)</i>	<i>11</i>	<i>23</i>	<i>5</i>	<i>2</i>	<i>0</i>	<i>41</i>
Economic and Social History	6	12	1	0	0	19
<i>Cumulative Total</i>	<i>57</i>	<i>95</i>	<i>14</i>	<i>0</i>	<i>0</i>	<i>166</i>
Economics	16	27	3	0	0	46
<i>Cumulative Total</i>	<i>110</i>	<i>373</i>	<i>44</i>	<i>1</i>	<i>2</i>	<i>530</i>
Education	4	13	0	0	0	17
<i>Cumulative Total</i>	<i>69</i>	<i>207</i>	<i>20</i>	<i>4</i>	<i>0</i>	<i>300</i>
Human Geography	10	16	0	0	0	26
<i>Cumulative Total</i>	<i>52</i>	<i>203</i>	<i>23</i>	<i>0</i>	<i>1</i>	<i>279</i>
Linguistics	5	3	1	0	0	9
<i>Cumulative Total</i>	<i>39</i>	<i>68</i>	<i>8</i>	<i>1</i>	<i>0</i>	<i>116</i>
Management and Business Studies	6	5	1	0	0	12
<i>Cumulative Total</i>	<i>34</i>	<i>194</i>	<i>53</i>	<i>1</i>	<i>0</i>	<i>282</i>
Planning	1	6	0	0	0	7
<i>Cumulative Total</i>	<i>14</i>	<i>70</i>	<i>11</i>	<i>1</i>	<i>0</i>	<i>96</i>
Political Science and International Relations	7	18	1	0	0	26
<i>Cumulative Total</i>	<i>99</i>	<i>229</i>	<i>34</i>	<i>0</i>	<i>1</i>	<i>363</i>
Psychology	19	57	2	0	0	78
<i>Cumulative Total</i>	<i>125</i>	<i>395</i>	<i>26</i>	<i>1</i>	<i>0</i>	<i>547</i>
Social Anthropology	3	4	0	0	0	7
<i>Cumulative Total</i>	<i>47</i>	<i>94</i>	<i>11</i>	<i>1</i>	<i>0</i>	<i>153</i>
Social Policy	1	8	1	0	0	10
<i>Cumulative Total</i>	<i>29</i>	<i>105</i>	<i>20</i>	<i>0</i>	<i>0</i>	<i>154</i>
Socio-Legal Studies	1	6	0	0	0	7
<i>Cumulative Total</i>	<i>18</i>	<i>68</i>	<i>17</i>	<i>1</i>	<i>1</i>	<i>105</i>
Sociology	7	33	5	0	0	45
<i>Cumulative Total</i>	<i>110</i>	<i>370</i>	<i>57</i>	<i>2</i>	<i>0</i>	<i>539</i>
Statistics, Computing and Methodology	1	6	0	0	0	7
<i>Cumulative Total</i>	<i>45</i>	<i>119</i>	<i>17</i>	<i>1</i>	<i>0</i>	<i>182</i>
Social Sciences	2	10	2	0	0	14
<i>Cumulative Total</i>	<i>1</i>	<i>16</i>	<i>3</i>	<i>0</i>	<i>0</i>	<i>20</i>
TOTAL	90	226	17	0	0	333
<i>Cumulative Total</i>	<i>860</i>	<i>2629</i>	<i>363</i>	<i>16</i>	<i>5</i>	<i>3873</i>

Grades

(O)utstanding: High quality work making an exceptional research contribution

(G)ood: Good quality work making a strong research contribution

(P)roblematic: Work of an acceptable quality but with weaknesses in some areas

(U)nacceptable: Poorly conducted research with unreliable results

Table O: Office Report 2005/06

Category	2003/04	2004/05	2005/06
1. STAFF NUMBERS (fte)			
Band 1	3.00	3.00	3.00
Band 2	11.00	11.00	13.70
Band 3	31.21	34.42	38.13
Band 4	26.21	31.24	33.11
Band 5	30.15	30.38	31.42
TOTAL	101.57	110.04	119.36
Communications & Information	30.55	32.71	35.09
Finance & Awards Management	17.69	17.71	17.17
Policy & Resources (incl HR & CEO)	22.72	28.85	29.21
Research, Training & Development	30.61	30.77	37.89
2. GENDER			
MALE	37.59	37.81	36.00
FEMALE	63.98	72.23	83.36
3. SICK ABSENCE (DAYS)			
MEDICAL CERTIFICATED	257	267	356
SELF CERTIFICATED	326	418	437
average no of days per person	5.5	6.2	6.0
4. TRAINING (DAYS)			
JTS	98	75	52
EXTERNAL (INC CORPORATE EVENTS)	30.5	118	95
5. STAFF TURNOVER (%)			
RESIGNATION RATE	8.3%	10%	14.8%

6. ENGAGEMENT

Communications and Information Committee - ESRC Society Today

TABLE P: A formal Benefits Realisation Plan was developed early on in the project and revised during the project as appropriate. The following table shows some of the **key statistics** compared to the year 1 targets. As with all web statistics, these need to be interpreted carefully (e.g. number of visitors is based on IP addresses of computers).

The visibility of *ESRC Society Today* on the World Wide Web is also very good and has improved. The Google rating (i.e the importance google attaches to a page) for its homepage used to be 4/10, and is now 8/10. There are about 32,500 links from external websites to our site.

Table P: ESRC Society Today WebTrends Executive Analysis
From: 23-03-2005 to 21-03-2006

	Total	12 Month Target	% of target achieved
Visitor Summary			
Unique Visitors	688,023	394,696	174
Visitors who visited once	538,032	309,667	174
Visitors who visited more than once	149,991	85,029	176
Average visits per visitor	2.18	-	
Visit Summary			
Visits	1,503,370.00	1,184,782	127
Average per Day	4,129	3,237	128
Average Visit Length	00:20:15		
Median Visit Length	00:02:30		
International Visits	70.07%		
Visits of Unknown Origin	0.44%		
Visits from United Kingdom (UK)	29.50%		
Hit Summary			
Successful Hits for Entire Site	58,665,146	13,227,470	444
Average Hits per Day	161,167	36,140	446
Home Page Hits	395,365	-	
Page View Summary			
Page Views	42,527,446	6,345,347	670
Average per Day	108,750	17,337	627
Average Page Views per Visit	26.84	21	129
Email Subscribers	861	2000	43

